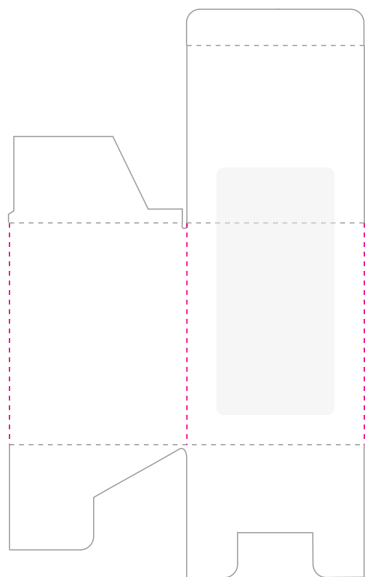
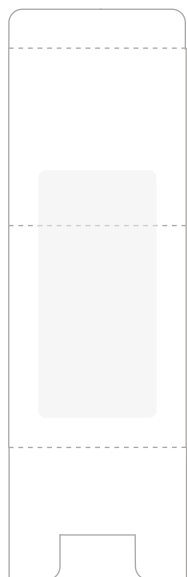


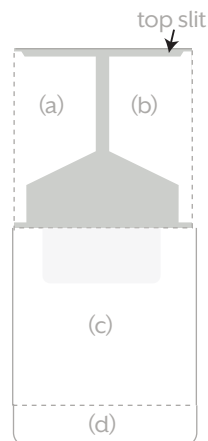
Large Stemless Wine Glass Gift Box With Clear Window



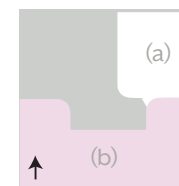
1. Pre-fold along pink scored lines to form a box shape.



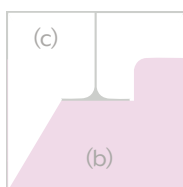
2. Your box should look like this.



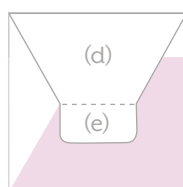
3. From the top view of the box, fold sides (a) and (b) like shown above. Fold flap (c) and insert tongue (d) inside the top slit to close the box.



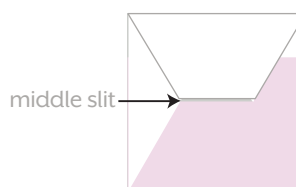
4. From the bottom view of the box, fold flap (a) and then (b) overtop of (a). Note: flap (b) is pink for demonstration only.



5. Fold flap (c) overtop of flap (b).



6. Fold flap (d) overtop of all flaps.



7. Place flap (e) inside the middle slit to close the bottom of box.



8. Place your glassware inside the box.



WWW.WEDDINGSTAR.COM

DESIGNED IN CANADA ©WEDDINGSTAR INC. ALL RIGHTS RESERVED.